
Insulation
USA



Kingspan: The Ultimate Insulation Solution Provider for Precast Walls

A Product for a Precast Producer's Insulation Needs



KOOLTHERM K20: THE NEXT GENERATION OF PROBLEM-SOLVING INSULATION

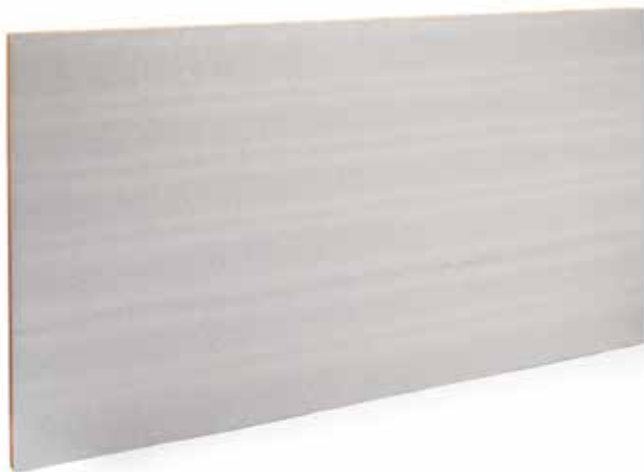
As insulation code requirements get more and more stringent, you need insulation that can solve your problems in a smaller space.

That's where Kingspan comes in.

Kingspan provides a product that doesn't just meet your basic needs — Kooltherm K20 insulation is the next generation of problem-solving insulation.

Thinner Insulation — Higher R-Value

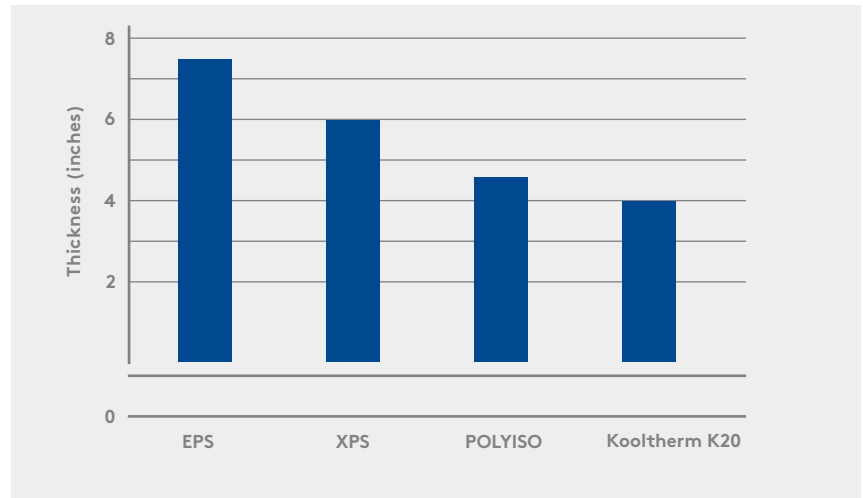
Kooltherm K20's thinness solves your problems, as Kooltherm K20 has the highest R-value per inch of commonly available insulations with an R-7.4 per inch.

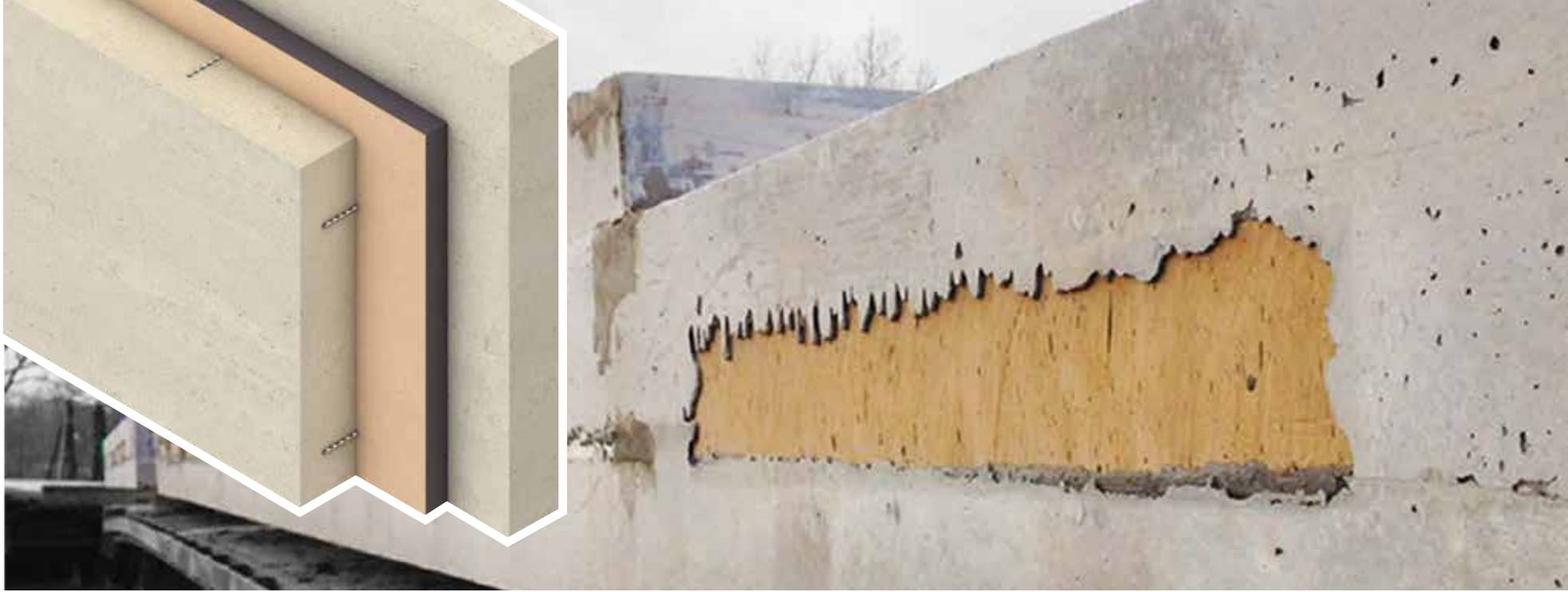


Why not use one thickness of Kooltherm K20 to meet all your R-value requirements and reduce downtime?

Don't waste valuable space on double layers of insulation. Kooltherm K20 helps you achieve R-30 in 4-inches. Our proven, ultra-thin insulation gives you premium performance in a fraction of the space, saving you room in your factories or storage yards. Plus, it reduces the number of truck deliveries you receive, saving you time and labor on unloading and storing.

THICKNESS NEEDED TO GET TO R-30			
EPS	XPS	POLYISO	KOOLTHERM K20
7.5 inches	6 inches	4.6 inches	4 inches





You also get labor savings. When installing insulation to be compliant with today's codes, the thickness of some insulation product needed to get to the right R-value — and then cover the installation with pre-cast concrete — can be costly, time-consuming and leave opportunities for error.

With Kooltherm K20, you only need to use one layer of insulation to get the R-value needed instead of the two layers the other types of insulation would need. It also reduces the amount of cutting, handling, and waste.

Why not choose the insulation that can work better for you, your team, and your project?

Reliable Fire-Resistance

Kooltherm K20 has been specially designed to produce negligible smoke. Our effective insulation has an ASTM E84 rating of 5/5 (fire/smoke) and has passed NFPA 285 as part of an extensive selection of compliant assemblies.

The Sustainable Product

Manufactured with a blowing agent that has zero ODP, Kooltherm K20 helps you build more environmentally friendly buildings because it has low GWP, low HCFC, and is CFC-free. Plus, it's supported by Kingspan's worldwide Planet Passionate program.



GREENGUARD XPS: INSULATION YOU CAN COUNT ON

GreenGuard XPS has been proven in the precast industry and is trusted to perform in all conditions.

Moisture-Resistance in an Easy to Handle Package

Kingspan's GreenGuard XPS insulation provides superior moisture resistance, thanks to its closed-cell construction.

But that doesn't make it hard to use.

XPS is lightweight and easy to handle. It's easy to cut to size — with no loose beads making a mess in your factory. Plus, if you don't have room inside to store the insulation, GreenGuard XPS can be kept outside throughout the year with no damage to the quality or performance of the

material, as long as it is protected from exposure to direct sunlight using the original packaging or an opaque, light-colored tarp. Material that has been unwrapped should be covered or rewrapped to keep it in top condition.

Insulation Properties You Need

GreenGuard XPS provides R-5 per inch, and it retains its insulation properties and integrity over time. You don't have to worry about premature failure with this product.

GreenGuard has been producing XPS for over 20 years and is now backed by Kingspan, a global leader in insulation and other construction materials.



PROVEN PRODUCTS

GreenGuard XPS has been around for decades; it's a product you know and love. And it's available from the most reliable insulation company around.

Kooltherm K20 has been used in thousands of projects worldwide for over 25 years. This is not just another fad. Kooltherm K20 is here to stay.

READY TO SEE THE DIFFERENCE?

Don't settle when it comes to insulation. After all, you (and your project) deserve the best.

Choose Kingspan XPS for your standard or moisture prone projects. Or see how Kooltherm K20 can give you great fire resistance and a higher R-value per inch in an ultra-thin package.

Take your insulation game to the next level.



YWCA CASE STUDY

Project Summary

Project: YWCA Hamilton

Completion Date: 2021

Location: Hamilton, Ontario, Canada

Building Type: Multi-family Housing Residence with a Community and Enterprise Center

Kingspan Products Installed: Kingspan's Kooltherm K20® Concrete Sandwich Board Insulation

Architect: Kearns Mancini Architects Inc. (KMAI)

Precaster: Coreslab Structures

Project Sq. Ft: 55,000 SF

Project Details

The YWCA Hamilton was founded in 1889 and the leaders of the organization decided in 2018 it was time for a new energy efficient building. The new building, built to International Passive House Standards, encompasses a set of design principles used to achieve a quantifiable and rigorous level of energy efficiency within a specific measurable comfort level.

Using Kingspan's Kooltherm® K20 Concrete Sandwich Board with Delta Ties allowed the team to reduce thermal bridging on the wall assembly. Because Kooltherm K20 is designed to enable thinner wall assemblies, this helped maximize floor area, and allowed the team to use the Delta Tie. The biggest challenge of the project was the flexibility that precast structures offer. Often interior configuration and structural spans are more rigid than conventional concrete/steel construction when using precast for all aspects of the building and not just a cladding system. The solution to this challenge was to use Kingspan's Kooltherm K20 insulation for the sandwich panel composition, a premium performance ridged thermoset insulation that is ideal for precast concrete wall applications.



CONTACT KINGSPAN TODAY

Don't take our word for it, order a sample and see for yourself.

Call us at 1-800-241-4402 or email us at precast.US@kingspan.com to talk to an insulation expert and have free samples of our Kooltherm® K20 insulation sent directly to you.

Let us show you what you've been missing.

Contact Details

USA

Kingspan Insulation LCC
2100 Riveredge Parkway | Suite 175
Atlanta | Georgia 30328

T: +1 (800) 241 4402
F: +1 (678) 589 7325
E: info@kingspaninsulation.us

www.kingspaninsulation.us



Please scan the QR code for the most recent product information.

Kingspan Insulation LLC believes the information and recommendations herein to be accurate and reliable. However, since use conditions are not within its control, Kingspan Insulation LLC does not guarantee results from use of such products or other information herein and disclaims all liability from any resulting damage or loss. No warranty, express or implied, is given as to the merchantability, fitness for particular purpose, or otherwise with respect to the products referred to. For more information on specific building product recommendations and product data, contact your Kingspan representative.

® Kingspan and the Lion Device are Registered Trademarks of the Kingspan Group plc in the US, Canada and other countries. All rights reserved.

kingspan-multi-product-precaster-brochure-en-us-v2.1
Version 2.1 - 01/2023

